

**Internal T.C.**  
***PROTRUSS 60***

# PRO

## PROTRUSS 60

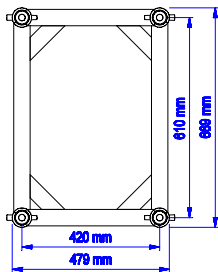
The P60 was specially developed for heavy duty applications - for stage applications, and rentals. The P60 truss is available in rectangular. Due to its slender shape, the rectangular model is also much in demand for applications in which the visual image generated plays an important role. The rectangular truss is also ideal from a logistics viewpoint (for storage as well as transport).

The conical connection pieces (large size) allow quick and easy assembly, practically without the use of tools.

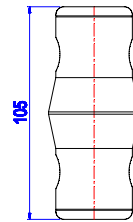
Interal produces a large assortment of corners, arches, circles and special constructions based on the Protruss 60 series.

The conical connection piece allows you to assemble your system in the shortest of time.

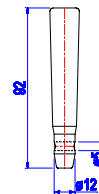
TECHNICAL SPECIFICATIONS PROTRUSS	
TYPE	R = RECTANGLE
ALLOY	EN-AW 6082 T6
TUBE	Ø 50 X 4 MM
BRACE	Ø 30 X 3 MM
CONNECTION	ALU. CONNECTION PIECE WITH SPIGOT AND R-SPRING



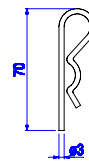
P60R



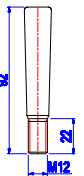
6050-002-001



6050-012-001



6050-013-001



6050-012-002



P60R



CONNECTION PIECES

PROTRUSS 60 SERIES	TUBE - Ø 50 X 4				
STANDARD LENGTHS (M)	0,50	1,00	1,50	2,00	3,00
60R (KG)	10,0	17,0	26,0	34,0	51,0