

**Interal T.C.**  
***PROTRUSS 100***

# PRO

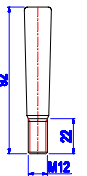
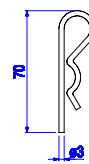
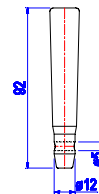
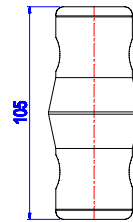
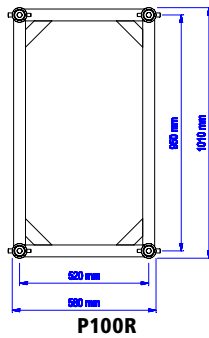
## PROTRUSS 100

Our Jumbo series has acquired a fully fledged Pre Rigg truss with the launch of the P100 truss. A main pipe of 60 x 6 mm and diagonals of 48 x 3 and 30 x 3 mm (EN-AW 6082 T6) have resulted in spans with a high load capacity now also forming part of the possibilities. The coupling itself will enter the main pipe by some 160 mm; this has finished off this truss' mechanical construction.

The P100 works with the same conical connection pieces as the P50 and P60. The conical connection pieces result in a fast and safe connection.

As the P100 is a truss which will be used less frequently, resulting in relatively high investment costs, Interlat T.C. can also offer you an alternative; i.e. you can hire them from us too.

TECHNICAL SPECIFICATIONS PROTRUSS	
TYPE	R = RECTANGLE
ALLOY	EN-AW 6082 T6
TUBE	Ø 60 X 6 MM
BRACE	Ø 30 X 3 MM Ø 48 X 3 MM
CONNECTION	ALU. CONNECTION PIECE WITH SPIGOT AND R-SPRING



### PROTRUSS 100 SERIES

### TUBE - Ø 60 X 6

STANDARD LENGTHS (M)	0,60	0,80	1,00	1,20	2,00	2,40	3,00
P100R (KG)	-	-	27,0	33,0	47,0	58,0	72,0

